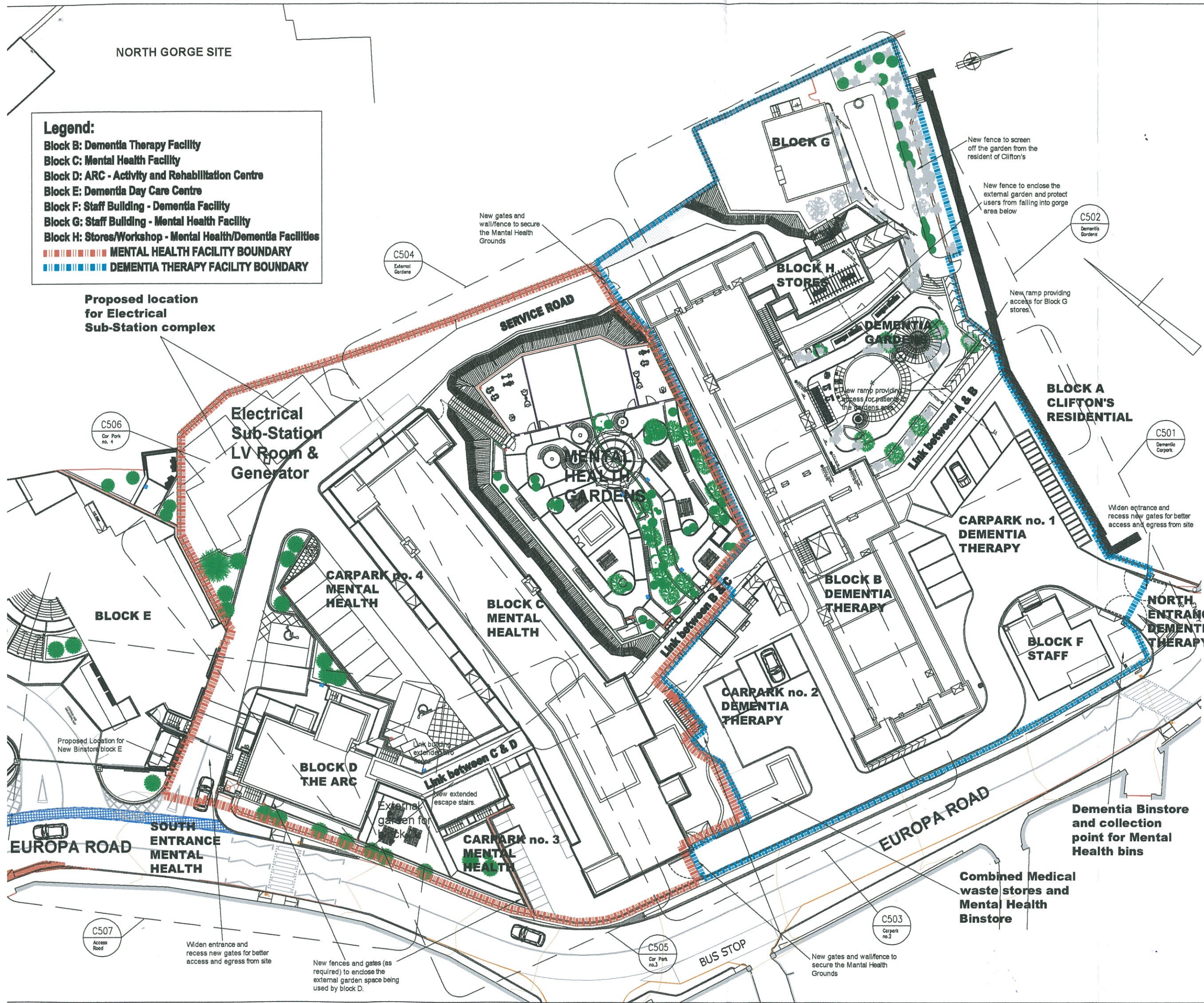


NORTH GORGE SITE

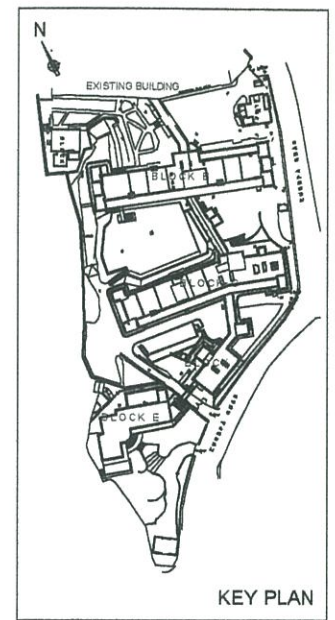
- Legend:**
- Block B: Dementia Therapy Facility
 - Block C: Mental Health Facility
 - Block D: ARC - Activity and Rehabilitation Centre
 - Block E: Dementia Day Care Centre
 - Block F: Staff Building - Dementia Facility
 - Block G: Staff Building - Mental Health Facility
 - Block H: Stores/Workshop - Mental Health/Dementia Facilities
 - MENTAL HEALTH FACILITY BOUNDARY
 - DEMENTIA THERAPY FACILITY BOUNDARY

Proposed location for Electrical Sub-Station complex



NOTES
 Do not scale from this drawing. Only figured dimensions are to be taken from this drawing.
 Contractor must verify all dimensions on site before commencing any work or shop drawings.
 Work within the Gibraltar Construction (Design & Management) Regulations is not to start until a Health and Safety Plan has been produced.
 This Drawing is Copyright and must not be reproduced without consent of GCArchitects.
 This drawing originates from the CAD file:
 Project: 7

Rev.	Description	Drawn Date	Checked Date
A	EXTERNAL AREAS AMENDED.	JJC 13.12.11	
B	EXTERNAL AREAS AMENDED.	MVG 28.02.12	
C	EXTERNAL AREAS AMENDED.	JJC 29.07.13	



NOTES

DRAWING TO BE READ IN CONJUNCTION WITH NBS SPECIFICATION. ONLY SELECTED NBS REFERENCES ARE SHOWN ON THIS DRAWING. PLEASE NOTE THAT CONTRACTOR IS RESPONSIBLE FOR FULL CROSS REFERENCING OF NBS SPECIFICATION AND DRAWINGS.

ALL DIMENSIONS GIVEN ARE IN MILLIMETRES AND MUST BE CHECKED ON SITE AND NOT SCALED FROM THESE DRAWINGS.

ALL WRITTEN DIMENSIONS TO BE CHECKED ON SITE BY CONTRACTORS / SUPPLIERS.

ALL MATERIALS AND FITTINGS TO BE TO BRITISH STANDARDS AND BEST QUALITY.

ALL WORKS TO COMPLY WITH LATEST GIBRALTAR CDM AND HEALTH & SAFETY REGULATIONS.

ALL AREAS DISTURBED OR EXPOSED DURING WORKS TO BE MADE GOOD TO MATCH EXISTING ADJACENT.

THE CONTRACTOR IS TO PROVIDE SAMPLES OF EXACT FINISHES AND FITTINGS TO BE APPROVED PRIOR TO PLACEMENT OF ORDERS AND/OR PROCEEDING WITH THE WORKS.

ALL ARISING TO BE CARTED AWAY AND DISPOSED OF IN ACCORDANCE WITH LOCAL REGULATIONS.

ALL COLUMNS AND STRUCTURAL ELEMENTS ARE INDICATIVE ONLY. REFER TO STRUCTURAL ENGINEER'S DRAWINGS FOR ALL STRUCTURAL ELEMENTS.

FOR M&E WORK REFER TO M&E ENGINEER'S DRAWINGS AND SPECIFICATION.

GCArchitects

Members of the Royal Institute of British Architects
 GCArchitects Ltd, Suite 1, First Floor, 21, Horse Barrack Lane, GIBRALTAR
 T: (350) 49650, F: (350) 49601, E: info@gcarchitects.gi, W: www.gcarchitects.gi

PROJECT
 Government of Gibraltar
 Former Royal Naval Hospital
 Gibraltar

DRAWING TITLE
 Proposed Site Plan

Scale	Drawn By	Checked By
1:200 @ A1	JJR	
Display Status	Date Drawn	Date Checked
CONSTRUCTION	16/07/10	

DRAWING NO.
 09012/B/C500 Rev. C